

Why choose Elthorne Park Sixth Form?



Our Sixth Form opened in 2009 and offers two pathways: the A Level programme and the Applied programme (BTECs).

Elthorne Park Sixth Form has established itself as a high performing Post 16 provider where students achieve outstanding academic success. We are proud to offer a broad curriculum comprising both A Level and BTEC qualifications, in order to meet the needs and ambitions of all of our learners.

We have wonderful, brand new facilities including:

- two state of the art dedicated sixth form ICT rooms;
- a new sixth form private study area and separate common room;
- a performing arts suite;
- an expanded library and coffee shop.

Our excellent team of Sixth Form teachers are specialists in bridging the gap between Key Stage 4 and Key Stage 5 learning. They look forward to continuing their work and building on relationships they have forged with students over the previous 5 years. Tutors are trained to support students in developing research, organisation and enquiry skills whilst enthusing them with a passion for their subject. With small class sizes we can give each student the tailored education he or she deserves.

Our dedicated Sixth Form team has a key aim: fulfilling the potential of all students. Students have a personal tutor who will be responsible for delivering individual support and guidance. They will also monitor progress and help develop strategies to ensure everyone meets their potential. Our personal knowledge of students means that no one gets left behind.

We also provide students with access to the industries that interest them and outstanding opportunities to enhance their CVs and UCAS (University and College Applications Service) applications through our careers programme.

Students take an active part in our Community Action Service (CAS). This requires them to take part in our community in a variety of engaging and exciting ways.

Our Sixth Form is unique. Our courses and pastoral care combined will be the best preparation you can get to help you achieve in your next stage of life.

“The teaching at Elthorne Park High School was the main reason for me to stay on in Sixth Form. I was not disappointed; all the teachers were aware of how I was progressing. In such a tight-knit community you are never left behind.”

Ifrah Ismail





Excellence in teaching and learning



“Elthorne has allowed me to fully achieve my potential through the tireless effort, enthusiasm and hard work of my teachers who are all models of professionalism.”

James Connelly

Here at Elthorne we always seek to recruit and deploy our very best teachers to teach our sixth form classes. Along with their specialist subject expertise, our teachers are always ready to give you the personalised tuition which makes all the difference to your confidence and achievement. We have a proven record of sustained improvement over the last 3 years, with A Level and BTEC results consistently excellent and amongst the highest in the borough.

Our knowledge of how students learn means that no two lessons are the same. Lessons will challenge students and promote independent learning outside the classroom. We constantly strive to develop our Key Stage 5 teaching and as a result have high expectations and an awareness that our students will be competing in the future global employment market. We encourage students to approach their studies with their long term goals in mind to ensure all relish the opportunities provided at Elthorne Park Sixth Form.

It is a requirement that all students research independently around their course content. Our Sixth Form centre is equipped with the latest technology and a Key Stage 5 library so all needed resources are at their finger tips. We encourage students to develop presentation skills and public speaking by regularly asking them to present to each other and wider audiences.





Outstanding support, challenge and achievement for all students

Our aim is to give you guidance and support on a range of issues which affect you including careers, finance and relationships. A Careers Advisor is on site for all Sixth Form students. You can request an individual interview or take part in larger group discussions. The advisor is an expert in making difficult decisions more manageable. She has time focussed solely on the Sixth Form therefore you will be seen promptly.

Our team of tutors begin the university applications process early to allow you sufficient time to consider all options. We dedicate time to train you in the skills required to submit an excellent application to the universities of your choice. We also appreciate the variety of pathways available to students after Sixth Form and seek to set out the full range of options.

Through our university contacts, we know that they look for students with high achievement and the determination which will make them a success. We are extremely proud of the destinations of our Year 13 students and this is a testament to their determination and the outstanding support and challenge provided at Elthorne Park Sixth Form.

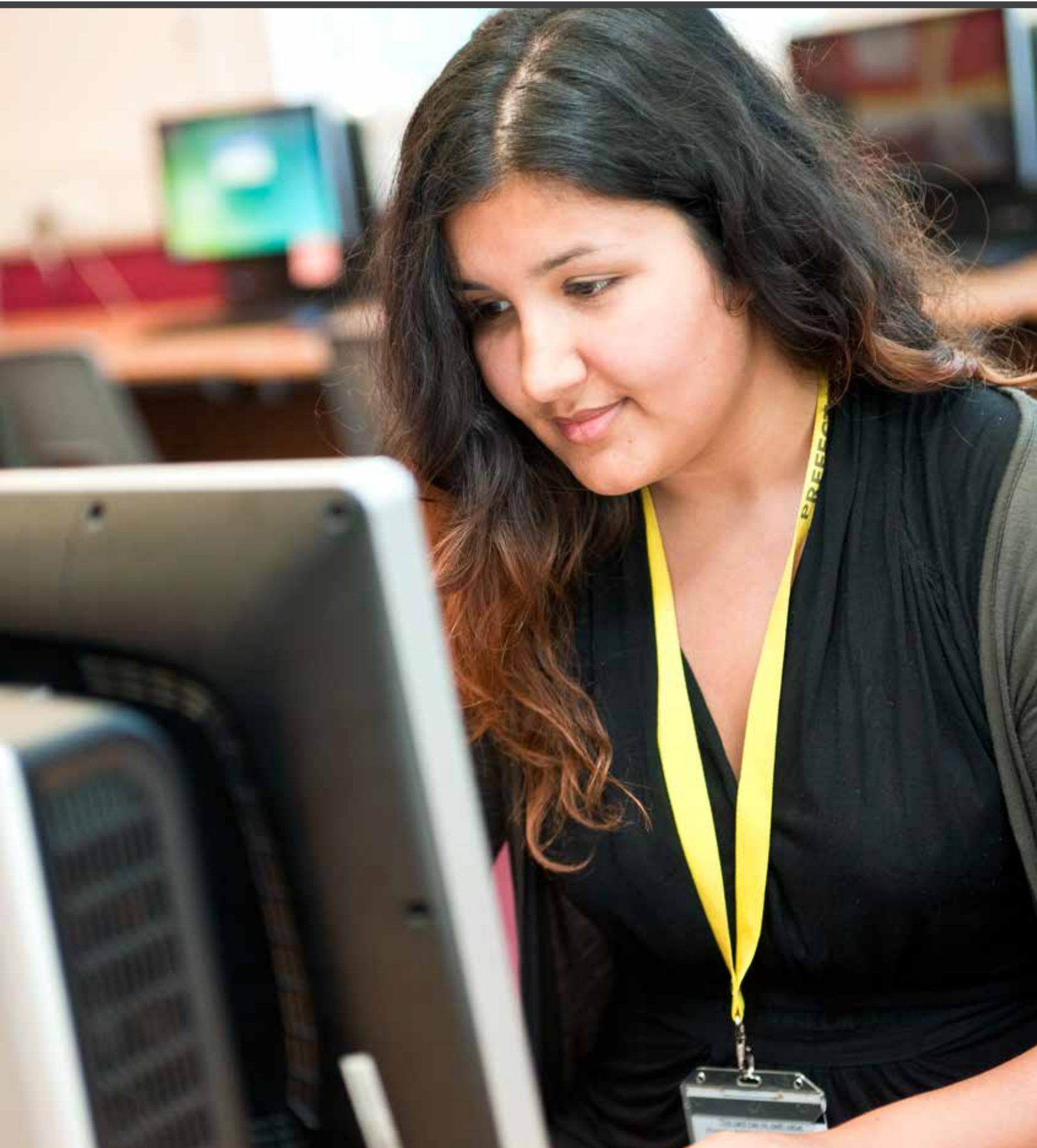
Elthorne Extended Programme (EEP)

Our aim is to enable young people with commitment to their studies to gain places at the best Russell Group universities. The programme is designed to cater for students who seek additional challenge in order to access Oxford, Cambridge or other top universities, or who are aiming to study medicine, dentistry or related courses. The programme will aim to develop the skills and aptitudes that top universities are looking for in interviews as well as enhancing students' academic achievements. The Enhanced programme includes the Extended Project Qualification (EPQ) alongside the opportunity to study four linear A Level qualifications.

"I have spent the best years of my life here at Elthorne Park High School. I wish it never had to end."

Nathaniel Kelly





Looking beyond Sixth Form

We know that employers and universities alike are looking for highly motivated students with a proven ability to learn, high level skills in communication, team work and problem solving. We offer an array of opportunities outside the classroom to develop in these areas. We are experienced in tutoring students for university admissions tests including BMAT, UKCAT, PAT and LNAT. We have links with Peterhouse and Jesus college, Cambridge and Oxford University. We offer a wide range of visits to university open days to help students when making crucial university decisions.

At Elthorne Park Sixth Form students have many opportunities to widen their experience and engage with the school as a whole. Sixth Form students can apply to be a prefect which involves representing the Sixth Form in the wider community, mentoring younger students and leading whole school events. Seizing these opportunities will expand all students' portfolios of skills to ensure they are well-rounded individuals, prepared for the next stage in life. We also have thriving links with employers and apprenticeship providers. We invite employers into Sixth Form as well as running a highly successful work experience programme.

All Sixth Form students have protected time to pursue extra-curricular activities. Students have chosen to take part in sports teams, volunteer, follow work experience or engage in other areas of school life. The Sixth Form itself has a range of clubs and societies which all students are encouraged to take part in, including debating society, chess club and many more.

We offer the Duke of Edinburgh Award Scheme, Sports Leadership Award Programme, international links with schools in China, Cuba, France and Italy and a sixth form ski trip plus a range of community projects.

"What makes Elthorne Park High School different is the real sense of community, support and belonging. Everyone's door is always open and everyone, student or teacher, is always prepared to listen or lend a hand."

Dayana Atanasova



Frequently asked questions

How do I choose my courses?

1. Read through all the course descriptions and talk to your teachers. Find out as much information as you can.
2. Think carefully about which subjects you enjoy and will help you move onto university, college or work. Which subjects will open up the kinds of opportunities and possibilities you might want in the future?
3. Research some universities and courses. Which courses might you want to study at university? What are their entry requirements?
4. Research jobs and careers. Which subjects, qualifications and skills make employers keen to employ you?

What financial support is there for Sixth Form students?

Sixth Form students on a full-time course who qualify for free school meals can apply for the 16-19 bursary. You will need to have good attendance and keep up with your work to stay eligible.

How do you keep me motivated?

You are assigned a personal tutor in Year 12 who will be responsible for your overall development and welfare, keeping you enthused and up to date with your work. Success in the Sixth Form is built on being organised and meeting deadlines. Your teachers plan your lessons to keep you motivated and make progress. Your personal tutor will also be in contact with your parents to ensure they are able to help you too.

How does the school help me get an NUS card?

A National Union of Students (NUS) card consists of over 80 national discounts available online or on the high street, and it is estimated to have saved the average student as much as £189 over the year. You will be able to apply for this through the Sixth Form.

What is UCAS and why does it matter?

UCAS stands for the University and College Applications Service. This organisation provides the gateway to all universities in the UK. It is the UCAS website you will register on at the end of Year 12 to begin your university application. The application process is online. You will have to upload your personal statement to your account. Universities will also respond to your application online, inviting you to interview or offering you a place.

How to apply

1.

Read though this prospectus, including the course details carefully. Speak to your tutor and subject teachers. Find out as much as you can.
2.

Look at the 'Progression Pathways' diagram in the course details booklet to see what the entry criteria are for each individual course.
3.

Fill in the application form. You can download one from our Sixth Form website.
4.

Once we have received your application form, you will be invited to interview to discuss your subject choices with a member of the Senior Leadership Team.
5.

Following your interview, you will receive a letter offering you a place, conditional on you achieving certain grades.
6.

Once you have received your GCSE results, confirm them with us. We can then welcome you into the Sixth Form. If you do not get the results you were expecting, speak to us and we will do our best to help you.

Dates and deadlines



November	Sixth Form Open Evening Application Forms available
October – January	Students submit Application Forms* and interview by senior staff
Early February	Deadline for Applications* (See application form)
Early July	Sixth Form Induction
August (GCSE Results Day)	GCSE Grades arrive and enrolment
First week in September	Sixth Form classes begin

*We shall certainly look at late applications, but we cannot guarantee being able to meet these students' needs.